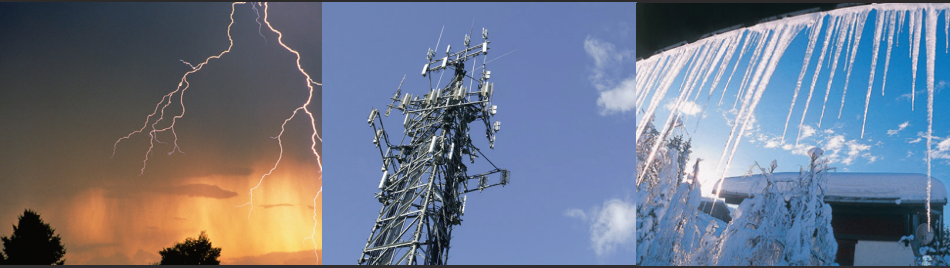


O3-3D3DN: 3 DS3s OVER A SINGLE FIBER



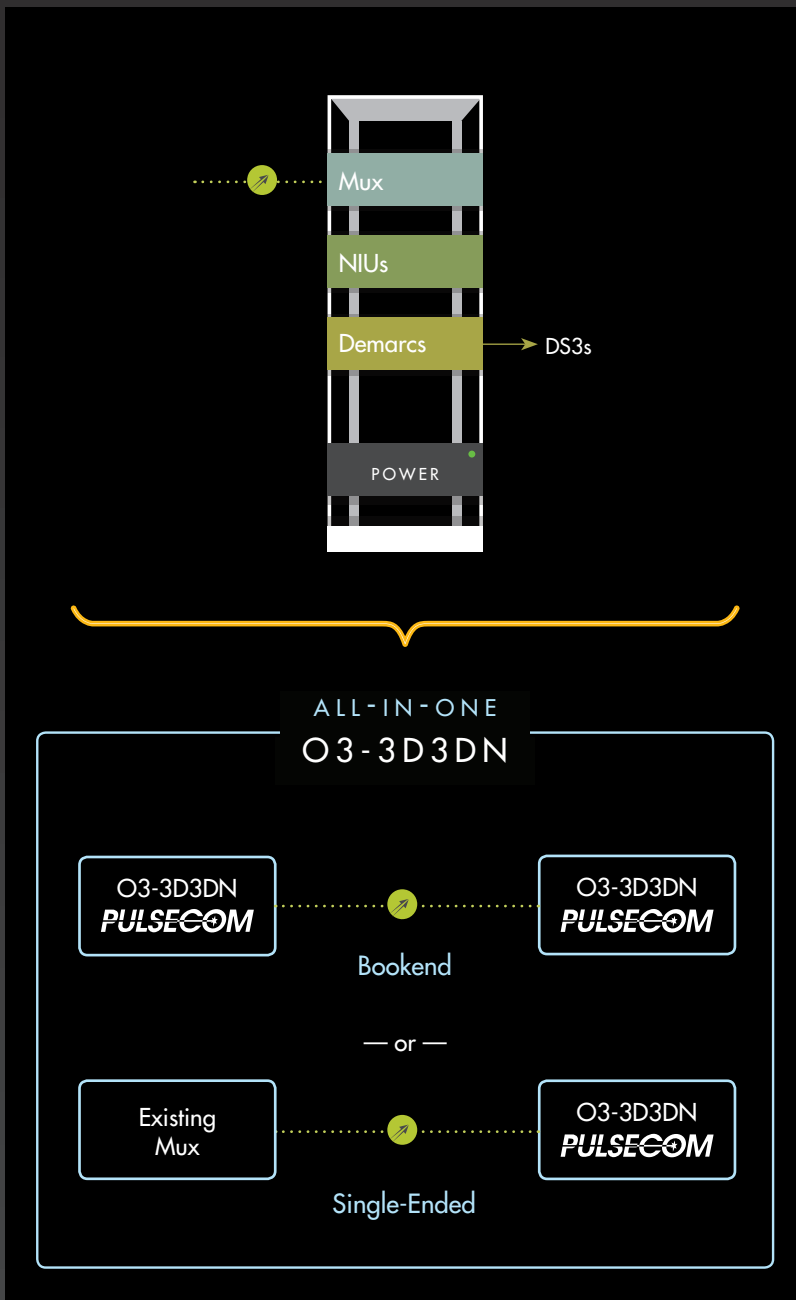
Preserves Fiber. Less Expensive. Faster. And designed to accelerate the transition to Ethernet.

- Reduces Truck Rolls to increase Ethernet budgets
- Frees Crews to work on Ethernet infrastructure
- Eliminates Maintenance diversions to permit greater Ethernet focus
- Familiar, compact 400-type mechanics
- Extends 3 DS3s from a SONET Mux in single-ended operating mode with full DCC support

Purpose-built to deliver fiber-based services to medium and small businesses, the **O3-3D3DN** replaces software, proprietary mountings and complicated turn-up with a miniature, fully integrated all-in-one device.

APPLICATIONS

- Preserve fiber for Ethernet
- Reduce DS3 costs to preserve Ethernet budgets
- Ready sites for Ethernet with fast, inexpensive Business, Military and Government DS3 fiber extensions
- Help economically justify fiber extensions to Business sites not yet ready to go 100% Ethernet
- Retire obsolete early-generation optical carrier systems
- Cost effectively extend DS3 demarcs to 3rd party wireless providers
- Streamline deployment with full DS3 NIU integration



FEATURES

- Service in Minutes
 - Reuse existing Shelves and CP528 cabinets
 - Patented Optionless Provisioning
 - +24Vdc, -48Vdc or 120Vac operation
- GR-253 Single-ended Operation
 - Fiber extensions from a higher-order mux OC3 drop
 - NMA DCC TL-1 Access
 - Single or dual fiber SFP optics
- Bookend Capability
 - A key means to leverage existing legacy muxes and preserve fiber for Ethernet
 - NMA access to CO and RT units via existing CO Routers
- Climate Hardened
 - GR-3108 Class 3 including -40°C to +70°C operation
 - Built-in GR-1089 OSP lightning protection

MIGRATION STRATEGY

Pulsecom access modules are designed to cost-effectively migrate subscribers to Ethernet. The **O3-3D3DN**, which optically extends up to 3 DS3s, is plug-compatible (in the same or different card slot) with the O3-12D1G Ethernet Transition Switch. Carrier Ethernet 2.0 Certified, the O3-12D1G delivers four GigEs and 12 circuit-emulated DS1s with patent pending full T1 NIU functionality, NMA TL1 remote access and automatic DS1 turn-up capability.

INTERFACES

Optical Interface: SFP optics for support of 1310nm, 1550nm, CWDM, extended range or single fiber bidirectional transport.

DS3 Interface: 6 BNC connectors.

Craft Port: Standard female DB-9, RS-232 front panel jack to access performance information and advanced provisioning capabilities.

Management Port: RJ45 100BT Ethernet for NMA TL1 access.



ORDERING CODE O3-3D3DN

APPLICABLE STANDARDS

GR-253-CORE (SONET) GR-499-CORE (DS3)
GR-820-CORE (DCC) GR-63-CORE (NEBS)
GR-1089-CORE (NEBS) GR-3108-CORE (OSP)

SPECIFICATIONS

Size: 5.6 x 1.4 x 5.9 in. (HxWxD), Type 400 mechanics
Power Dissipation: 14 W
Input Voltage: 21.0VDC to 56.7VDC
Nominal Current: 295mA at -48VDC, 590mA at 24VDC
Operating Temperature: -40° to +70° C

PULSECOM



fiber backhaul



energy efficiency

www.pulse.com
2900 Towerview Rd, Suite 200
Herndon, VA 20171
Customer Service: 1.800.381.1997

Pulsecom is a trademark of Hubbell Incorporated. The Pulsecom Fiber Backhaul logo is a trademark of Pulse Communications, Inc. Information contained in this publication is subject to change without notice.
©2014 Pulse Communications, Inc.
All rights reserved.