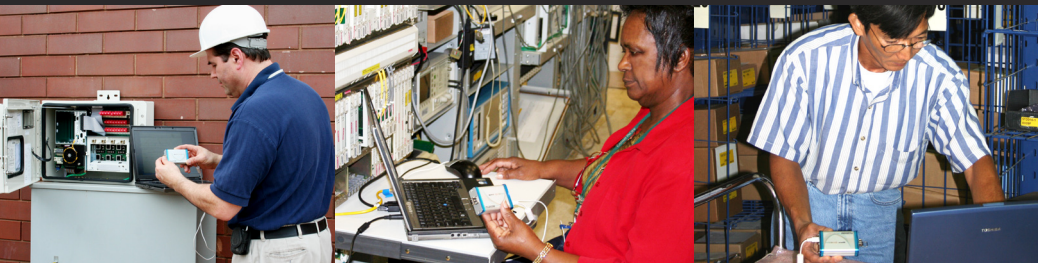


SFP CHECK™

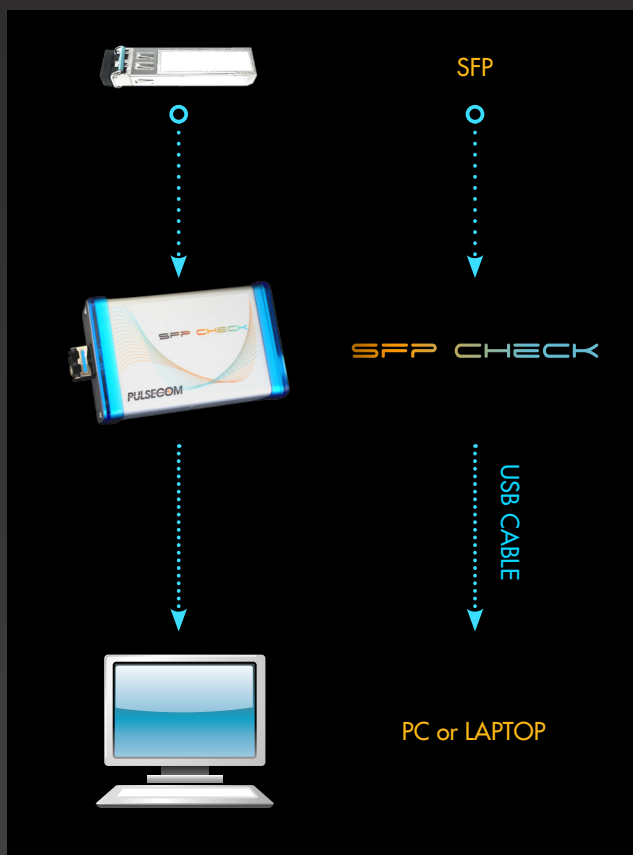
SFP READER AND TESTING DEVICE



The typical SFP has a label on it with the vendor's name and the vendor's part number. But how do you know what it is?

The **SFP Check** reads the internal memory of the SFP and displays details such as the wavelength, description, and range.

When used with an SFP supporting digital diagnostics, the **SFP Check** can be used as a coarse level optical power meter. Terminate an incoming fiber optic cable with an SFP inserted into the **SFP Check** to display the incoming optical power level. Or loop the transmit signal of an SFP back on itself using a fiber jumper to verify proper SFP operation.



FEATURES

- Provides display of SFP operating characteristics in an easy-read format
- Enables go/no go evaluation of SFP operation
- Operates from the default web browser — no software to load
- Requires **no** external power.
- Connects to a standard PC/laptop via USB connection

APPLICATIONS

Central Office, Field and Data Centers

- verify correct SFP
- confirm proper transmit and receive signal levels

Distribution centers and Incoming Inspection

- verify SFP matches the order
- ensure proper operation

Engineering labs

- eliminate stockpiles of "unknown" SFPs
- qualify SFPs for use

Manufacturing

- verify proper encoding

INTERFACES

USB

USB cable included

SFP Connector

APPLICABLE STANDARDS

The SFP Check supports the display of ID information for SFP transceivers manufactured to:

SFP MSA September 14, 2001
SFP Multisource Agreement
INF-8074 Rev. 1.0
Specification for SFP Transceiver

The SFP Check supports the display of ID and diagnostic information for SFP transceivers manufactured to:

SFF-8472 up to and including Rev. 10.4
Diagnostic Interface for Optical Transceivers

SPECIFICATIONS

Size: 3.25 x 2.125 x 1.0 inches (H x W x D)

Power: No external power required

Operating Temperature: -40° to +65° C

ASSOCIATED PRODUCTS

To further simplify testing with the SFP Check, the following items are also available:

SFPs

Multimode, Single Mode, CWDM, DWDM,
Single fiber bi-directional

Fiber Jumpers

Single Mode, Multimode, LC/LC and LC/SC
in various lengths

Optical Attenuators



ORDERING CODE SFP CHECK

PULSECOM

www.pulse.com
2900 Towerview Rd, Suite 100
Herndon, VA 20171
Customer Service: 1.800.381.1997

Pulsecom is a registered trademark of Hubbell Incorporated. SFP Check is a trademark of Pulse Communications, Inc. Information contained in this publication is subject to change without notice. ©2009 Pulse Communications, Inc. All rights reserved.

PLEASE CALL FOR DETAILS